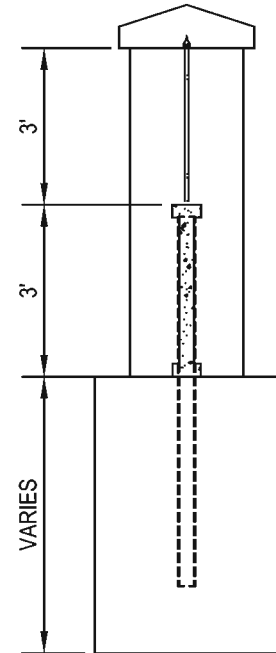
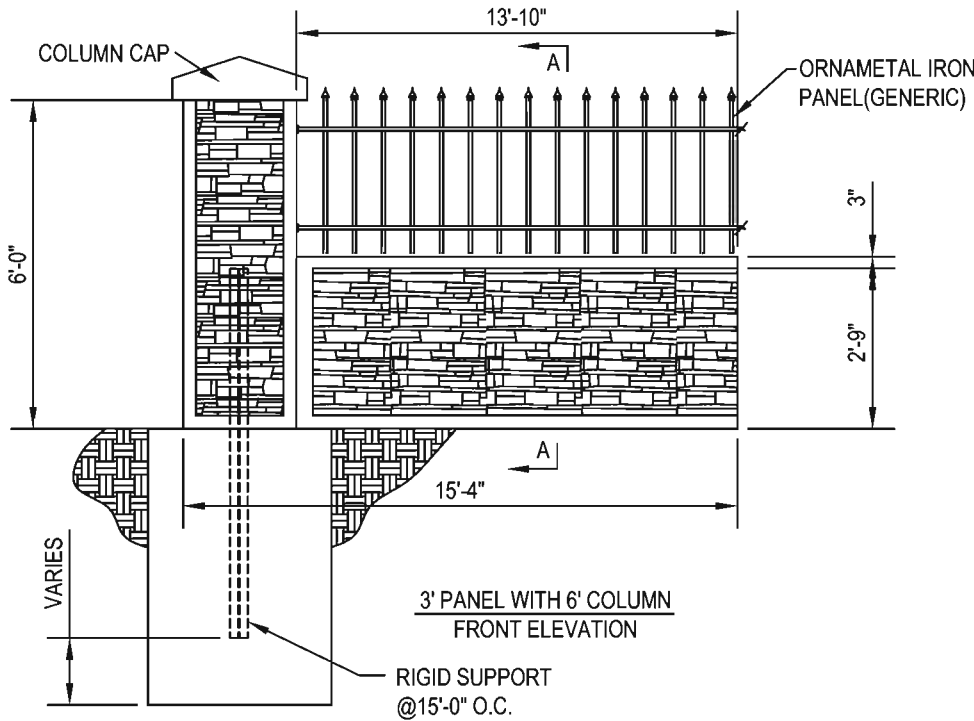
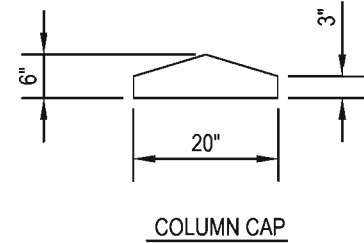
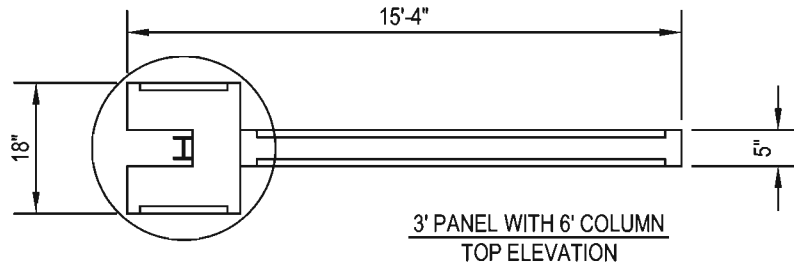


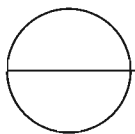


4730 S. RIVERSIDE DRIVE
 SALT LAKE CITY, UT 84123
 TOLL FREE: 1-866-370-3676
 PHONE: (801) 281-2262
 FAX: (801) 281-2272
 www.stonetreefence.com



NOTES:

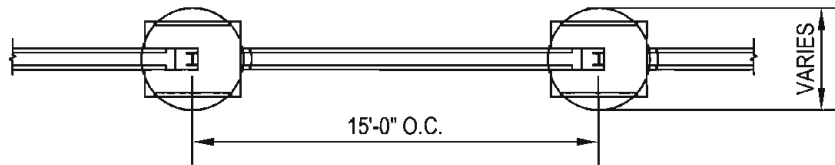
1. INSTALLATION TO COMPLY WITH ENGINEERING FOR WIND LOADS, SOIL CONDITIONS (AND SEISMIC WHERE APPLICABLE).
2. DRAWINGS NOT TO SCALE.
3. VARIOUS TEXTURED FINISHES ARE AVAILABLE BUT NOT IN ALL MARKETS.
CHECK WITH AFTEC FOR THE LOCATIONS & DESIGNS PRODUCED BY LICENSED MANUFACTURERS*.
4. FOOTING DIMENSIONS VARY ACCORDING TO WALL HEIGHT AND JOB SITE CONDITIONS.



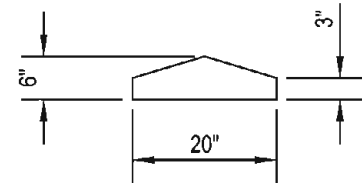
3' PANEL WITH 6' COLUMN COMBINATION



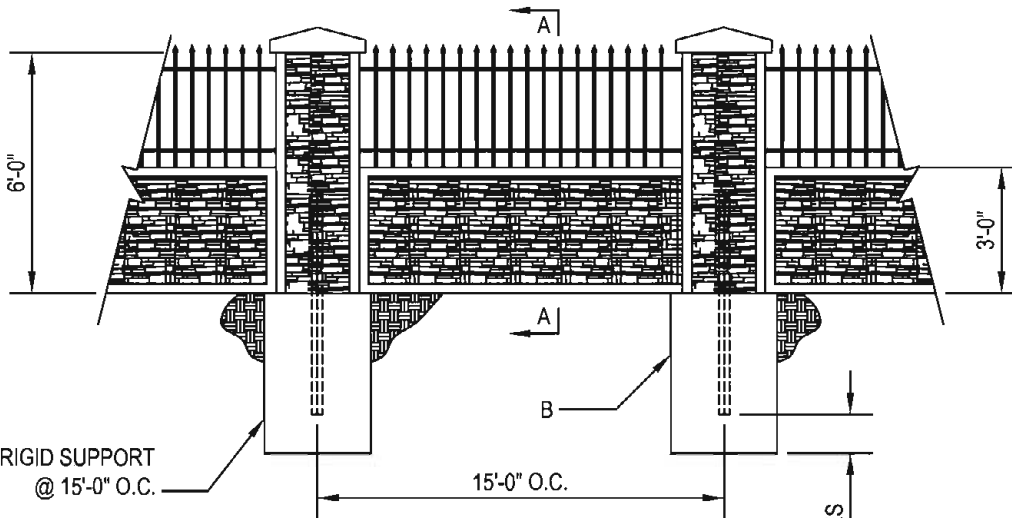
4730 S. RIVERSIDE DRIVE
 SALT LAKE CITY, UT 84123
 TOLL FREE: 1-866-370-3676
 PHONE: (801) 281-2262
 FAX: (801) 281-2272
 www.stonetreefence.com



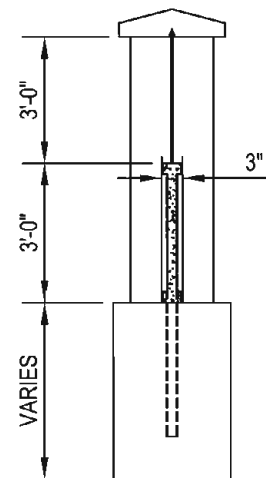
B - 4' PANEL WITH 8' COLUMN WITH
 FOUNDATION TOP ELEVATION



COLUMN CAP



3' PANEL WITH 6' COLUMN WITH
 FOUNDATION FRONT ELEVATION



A-A 8' PANEL WITH 8' COLUMN WITH
 FOUNDATION SIDE ELEVATION

NOTES:

1. INSTALLATION TO COMPLY WITH ENGINEERING FOR WIND LOADS, SOIL CONDITIONS (AND SEISMIC WHERE APPLICABLE).
2. DRAWINGS NOT TO SCALE.
3. VARIOUS TEXTURED FINISHES ARE AVAILABLE BUT NOT IN ALL MARKETS.
 CHECK WITH AFTEC FOR THE LOCATIONS & DESIGNS PRODUCED BY LICENSED MANUFACTURERS*.
4. FOOTING DIMENSIONS VARY ACCORDING TO WALL HEIGHT AND JOB SITE CONDITIONS.

**3' PANEL WITH 6' COLUMN WALL W/
 ORNAMENTAL IRON SYSTEM ELEVATION**

